

## ALBERI PNEUMOMECCANICI CX

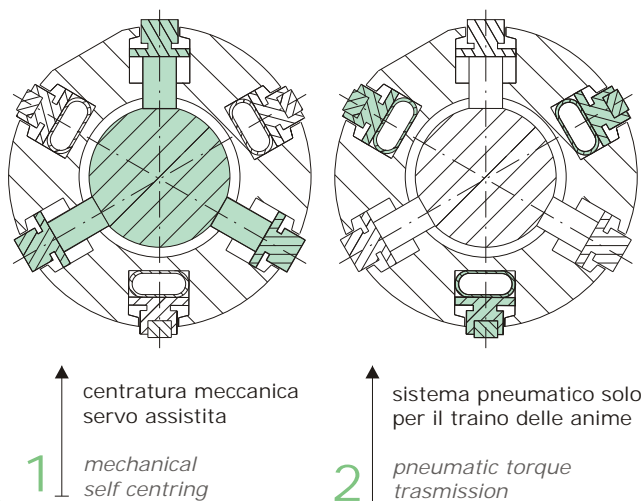
Gli alberi espansibili CX, oltre ad avere le stesse caratteristiche degli alberi DX, sono caratterizzati dal comando pneumomeccanico che consente un perfetto centraggio della bobina.  
Questa soluzione è indispensabile in tutti i casi in cui una bobina deve essere svolta o riavvolta in modo perfettamente concentrico per evitare stress al materiale.  
Per questa caratteristica l'albero autocentrante è utilizzato per l'alluminio o altri materiali con spessori di alcuni micron.  
Attraverso un'ottimizzazione costruttiva possiamo realizzare questi alberi a prezzi decisamente competitivi rispetto alla nostra concorrenza.

## SELF CENTRING EXPANDING SHAFTS CX

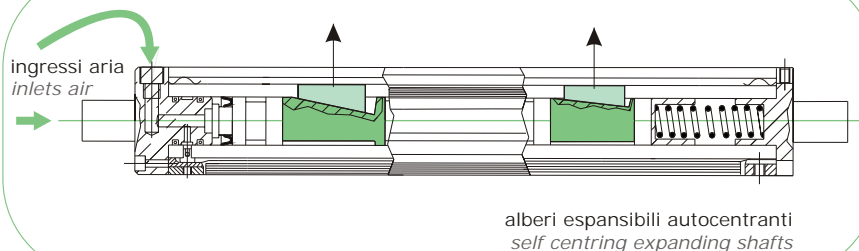
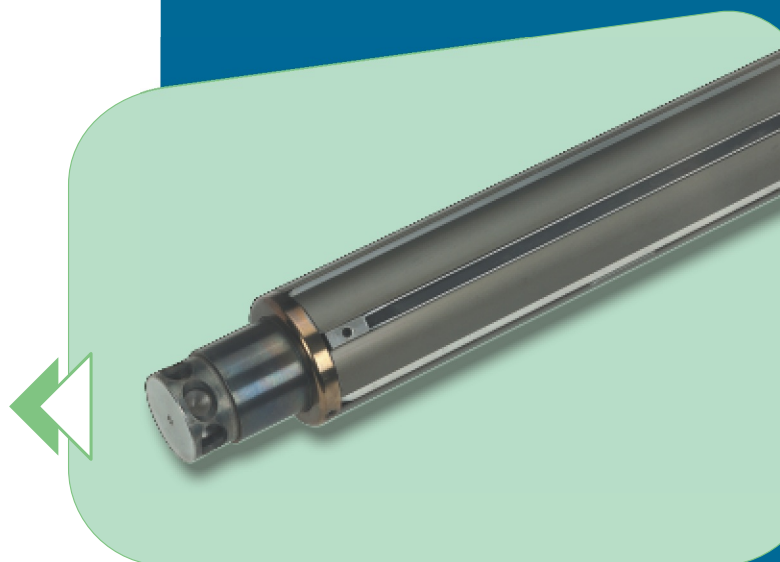
*The CX expanding shafts not only have the same characteristics as the DX shafts, they are also characterised by pneumatic - mechanical control, allowing perfect reel centring. This solution is essential in all cases in which a reel must be unwound or rewound in a perfectly concentric fashion, to avoid stress on the material.*  
*This is why the self-centring shaft is used for aluminium or other materials with a thickness of several microns.*  
*Thanks to optimised construction, we can also make these shafts at very competitive prices.*

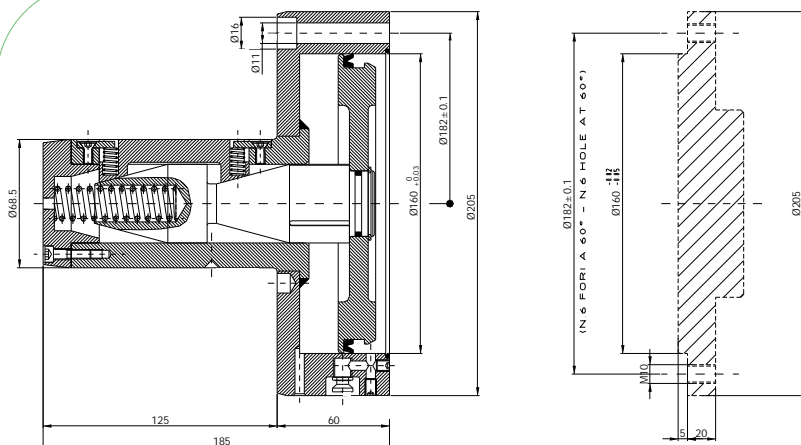
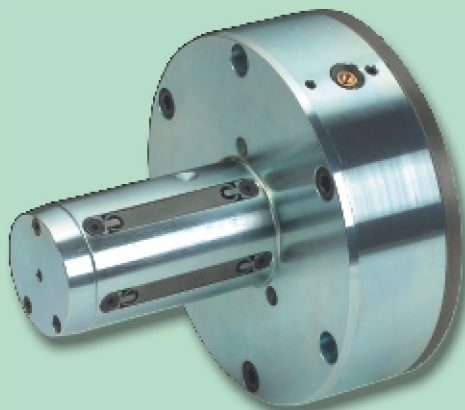


### sistema combinato Centrimax combined system Centrimax



## ALBERI ESPANSIBILI AUTOCENTRANTI CX SELF CENTRING EXPANDING SHAFTS CX





DATI TECNICI:

- Pressione Aria: 5 bar min;
  - Carico MAX ammesso: 1000 Kg;
  - Coppia Max: 45 Kg Mt (con 6 bar di pressione);
  - Espansione: da 68,5 a 80 mm;
- Per anime con  $\varnothing$  interno da 70 mm e 76,2 mm (3") - codice 2X01002

TECHNICAL DATA:

- Air pressure: 5 bar min;
  - Max load adm: 1000 Kg;
  - Max torque: 45 Kg Mt (with 6 bar of pression);
  - Diam. expantion: da 68,5 a 80 mm;
- For inside core diam. 70 mm and 76,2 mm (3") - code 2X01002

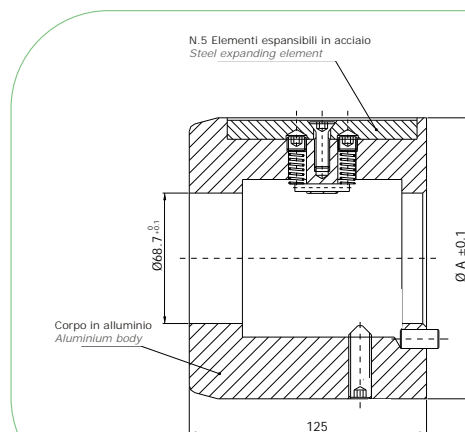
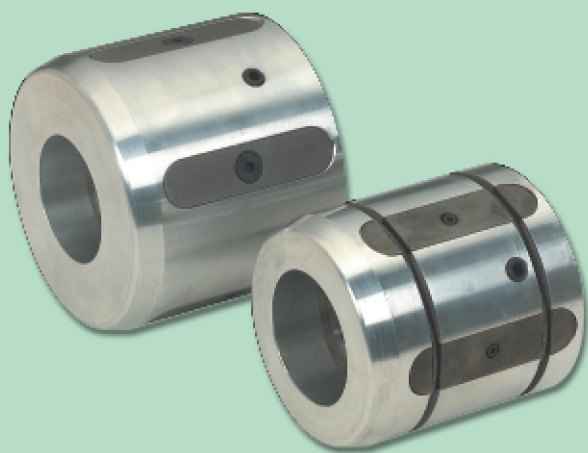
TESTATA MX 16.3 CON ADATTATORI AX  
CHUCKS MX 16.3 WITH ADAPTORS AX

## TESTATE MX 16.3 CON ADATTATORI AX

Le testate autocentrate MX con i relativi adattatori diametrali AX vengono impiegate sia in svolgimento che in avvolgimento, per applicazioni shaft-less.

## CHUCKS MX 16.3 WITH ADAPTORS AX

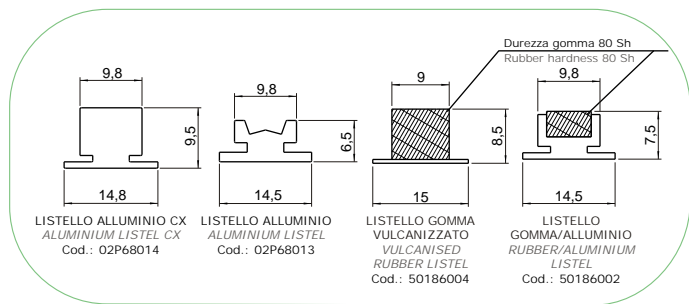
*The MX self-centring chucks with AX diameter adaptors are used both for unwinding and winding, for shaft-less application.*



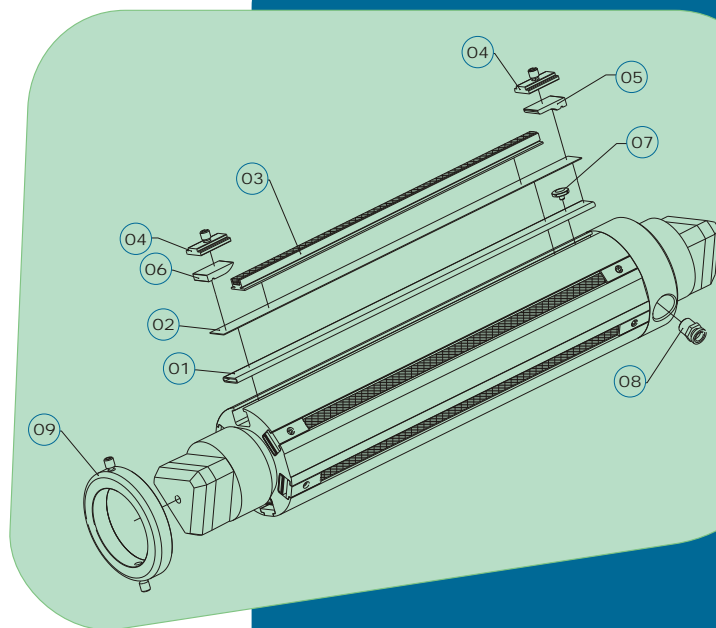
ADATTATORE SERIE AX PER  
TESTATA PNEUMOMECCANICA MX 16.3  
*ADAPTORS AX FOR  
PNEUMOMECHANICAL CHUCKS MX 16.3*

## CARATTERISTICHE TECNICHE / TECHNICAL DATA

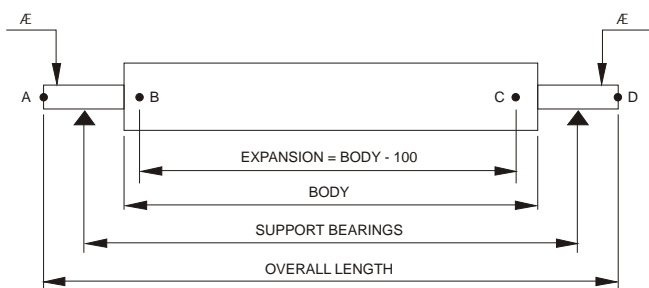
Adattatore <i>Adaptor</i>	Codice <i>Code</i>	Diametro A (mm) <i>Diameter A (mm)</i>	Coppia MAX (kg mt) <i>MAX torque (kg mt)</i>	Espansione diametrale mm <i>Diameter expansion mm</i>	Per anime diam. int. <i>Inside core diam.</i>
AX4	2X01004	98,5	60	da 98,5 a 104	100 (4")
AX5	2X01006	119	65	da 119 a 130	120 (5")
AX6	2X01003	148	80	da 148 a 155	150 (6")



ELENCO RICAMBI PER DIAM. 69-75-148 SPARE PARTS FOR DIAM. 69-75-148		
posizione position	codice code	descrizione description
01	02P66001	camera aria poliuretano / white air tube
	02P66003	camera aria gomma / black air tube
02	02P69002	nastro protettivo nylon / protective tape
03	50186002	listello gomma/alluminio / rubber aluminium listel
	50186004	listello gomma vulcanizzato / vulcanised rubber listel
	02P68014	listello alluminio CX / aluminium listel CX
	02P68013	listello alluminio / aluminium listel
04	02P65002	morsetto con grano / clamp with screw (69-75)
	02P65003	morsetto con grano / clamp with screw (148)
05	02P65004	morsetto lato valvola / clamp for valve side
06	02P65005	morsetto lato neutro / clamp for air tube
07	02P40001	nipplo per camera d'aria / air tube nipple
08	02P72002	valvola 1/8" NPT / valve 1/8" NPT
	02P02004	anello di chiusura / closure ring (69)
	02P02002	anello di chiusura / closure ring (75)
09	02P02001	anello di chiusura / closure ring (148)

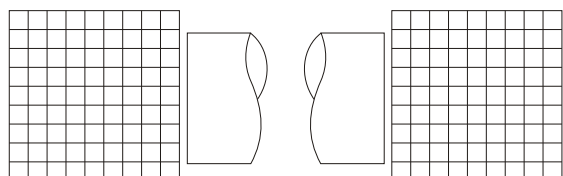


## TECHNICAL SHEET FOR AIR EXPANDING SHAFTS



valve position: ☐ A ☐ B (std.) ☐ C (std.) ☐ D

WE ASK YOU TO SEND ALWAYS A COMPLETE AND CONSTRUCTIVE DRAWING OF THE EXPANDING SHAFT



TO RECEIVE AN OFFER, PLEASE COPY THE FORM AND FAX US IN A4 SIZE. WE ASK YOU TO FILL OUT THE SHEET INDICATING ALL THE REQUIRED VALUE AND DATA.

Rotech s.r.l. will not assume any responsibility and will not answer for the application, in case the data indicated on this sheet are incomplete, wrong, approximate and untrue.

**Rotech** EQUIPMENTS  
CLIENT \_\_\_\_\_  
REF. MR \_\_\_\_\_  
Tel \_\_\_\_\_ Fax \_\_\_\_\_  
E info@rotech.it e-mail \_\_\_\_\_

### BASIC INFORMATION FOR THE APPLICATION (customer)

01. inside core  $\varnothing$  \_\_\_\_\_ mm - outside core  $\varnothing$  \_\_\_\_\_ mm  
 02. core material ☐ cardboard ☐ steel ☐ plastic ☐ other \_\_\_\_\_  
 03. ☐ rewinding ☐ unwinding  
 04. max roll Lg \_\_\_\_\_ mm weight \_\_\_\_\_ kg  $\varnothing$  \_\_\_\_\_ mm  
 05. min roll Lg \_\_\_\_\_ mm weight \_\_\_\_\_ kg  $\varnothing$  \_\_\_\_\_ mm  
 06. slit rolls Lg \_\_\_\_\_ mmTOT weight \_\_\_\_\_ kg/EACH  $\varnothing$  \_\_\_\_\_ mm  
 07. nr of rolls \_\_\_\_\_ for shaft  
 08. web speed \_\_\_\_\_ mt/min  
 09. emergency stop \_\_\_\_\_ sec  
 10. roll material \_\_\_\_\_  
 11. web tension \_\_\_\_\_ kg  
 12. rewinding scheme ☐ ☐ ☐ ☐  
 13. present type of shaft: \_\_\_\_\_

### EXPANDING SHAFT APPLICATION (supplier)

1. TYPE OF EXP. SHAFT  
☐ strips ☐ keys ☐ sleeve ☐ other  
 2. EXPANDING SHAFT MATERIAL  
☐ standard extruded profile ☐ aluminium tube ☐ ergal tube (lega 7020)  
☐ steel C40 ☐ steel (39NiCrMo3)  
 3. AIR EXPANDING SHAFT DIAMETER  
☐ 69 ☐ 75 ☐ 148 ☐ other  
 4. TECHNICAL DATA  
 max deflection \_\_\_\_\_ mm  
 weight \_\_\_\_\_ kg  
 torque \_\_\_\_\_ kgm  
 max diameter expansion \_\_\_\_\_ mm  
 strips n. \_\_\_\_\_  
 5. OTHER  
☐ body surface treatment  
☐ anodising (only for aluminium shafts)  
☐ zinc plating (only for steel shafts)