

DKB

Codice Code	Portata Load	A	B	C	D	E	F	G	H	L	M	N	O	P	Q	S
												(max)				
DKB30	5072200	kg 800	22	78	54	75	63	13	105	140	78	50	30	140	M6x12 (N.4)	18 26
DKB40	5070250	kg 1.600	25	90	77	85	60	16,5	130	170	99	65	40	160	M6x12 (N.4)	20 18

CARATTERISTICHE TECNICHE / TECHNICAL DATA

portata massima
maximum load

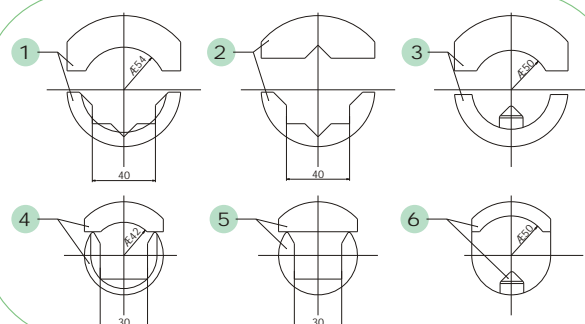
8000 N

velocità massima di lavoro
maximum working speed

1100 RPM

coppia torcente massima trasmissibile
maximum transmissible torque

900 Nm

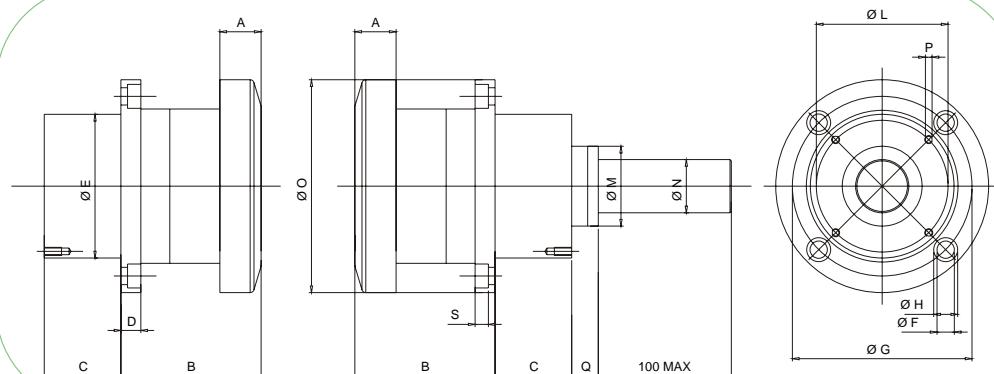


SUPPORTI A PIEDE E FLANGIA DK/DKB
FOOT AND FLANGE SAFETY CHUCKS DK/DKB

	Numero Number	Codice Code
Kit inserti DK/DKB	1	02B76002
	2	02B76004
	3	02B76006
Kit inserts DK/DKB	4	02B76001
	5	02B76003
	6	02B76005



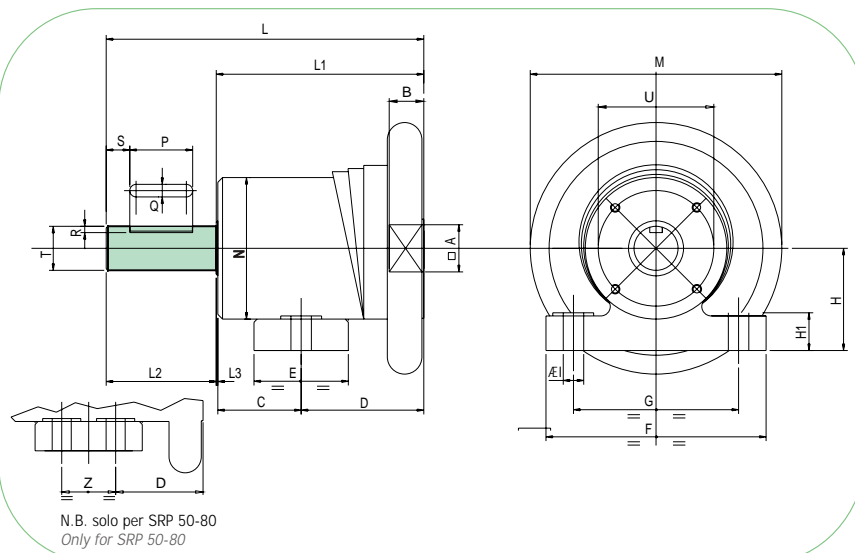
DK



Codice Code	Portata Load	A	B	C	D	E	F	G	H	L	M	N	O	P	Q	S
												(max)				
DKB30	5070202	kg 800	22	91	41	18	90	11	115	17	78	50	30	140	M6x12 (N.4)	18 10
DK40	5070252	kg 1.600	25	97	70	15	110	13	135	18	99	65	40	160	M6x12 (N.4)	20 10



SRP



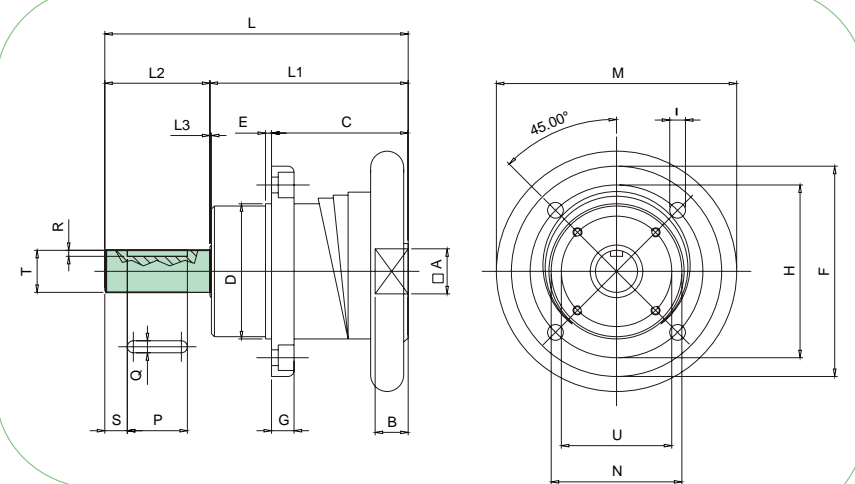
SRP SUPPORTI A PIEDE / FOOT SAFETY CHUCKS

Tipo	Portata	A	B	C	D	E	F	G	H	H1	ØI		
Size	Load												
SRP.30	kg 800	30	22	53	78	60	140	105	65	22	13		
SRP.40	kg 1.600	40	25	60	90	60	170	105	75	25	15		
SRP.50	kg 2.800	50	27	-	84	120	200	160	75	25	14		
SRP.80	kg 7.000	80	35	-	124	170	250	200	90	27	18		
	L	L1	L2	L3	ÆM	ÆN	P	QP9	R	S	ÆTk6	Z	U
SRP.30	202	132	70	1	160	88	40	8	4	15	28	-	4xM6 Æ73,5
SRP.40	222	152	70	2	212	110	40	10	5	15	35	-	4xM8 Æ 93
SRP.50	310	200	110	2	235	135	90	14	5,5	10	50	80	4xM8 Æ 112
SRP.80	420	280	140	3.5	320	176	110	20	7.5	15	75	120	4xM8 Æ 154

SUPPORTI A PIEDE E FLANGIA SRP/SRF FOOT AND FLANGE SAFETY CHUCKS SRP/SRF



SRF

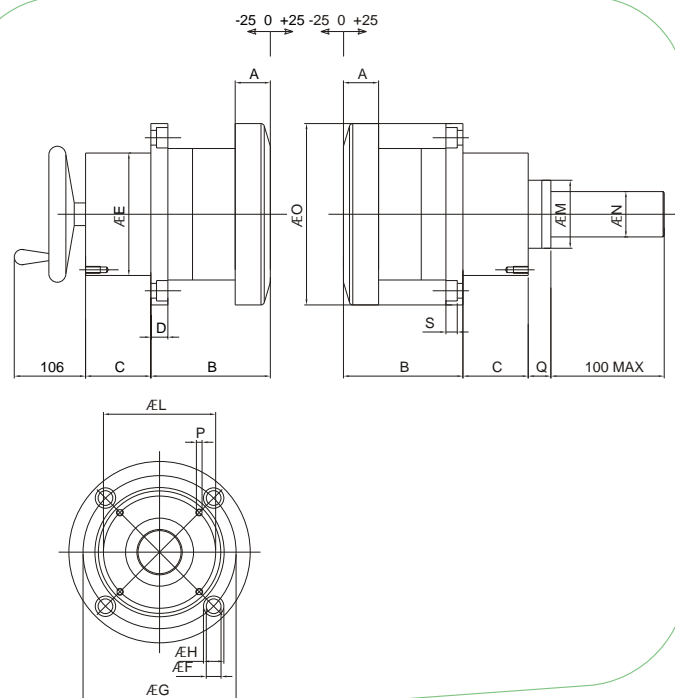


SRF SUPPORTI A FLANGIA / FLANGE SAFETY CHUCKS

Tipo Size	Portata Load	A	B	C	ÆDf7	E	ÆF	G	ÆH	I	L
SRF.30	kg 800	30	22	91	90	4	140	15	115	4xÆ11	202
SRF.40	kg 1.600	40	25	98	110	8	160	16	135	4xÆ13	222
SRF.50	kg 2.800	50	27	130	130	8	210	22	170	4xÆ19	310
SRF.80	kg 7.000	80	35	200	185	12	260	27	220	6xÆ14	420
	L1	L2	L3	ÆM	ÆN	P	QP9	R	S	ÆTk6	U
SRF.30	132	70	1	160	87	40	8	4	15	28	4xM6 Æ 73,5
SRF.40	152	70	2	212	107	40	10	5	15	35	4xM8 Æ 93
SRF.50	200	110	2	235	128	90	14	5,5	10	50	4xM8 Æ 112
SRF.80	280	140	3,5	320	176	110	20	7,5	15	75	6xM8 Æ 154

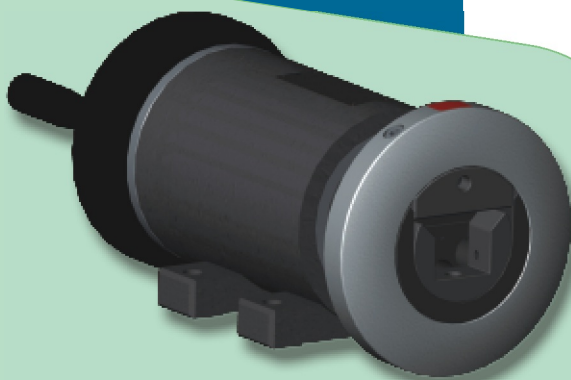


DK

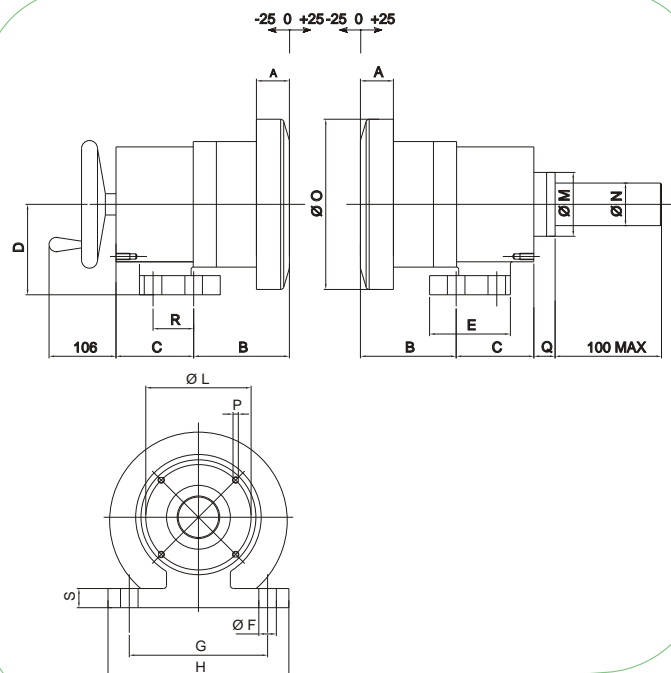


	Codice <i>Code</i>	Portata <i>Load</i>	A	B	C	D	E	F	G	H	L	M	N (max)	O	P	Q	S
DK30.A50	5070206	800 kg	22	108	141	16	100	11	125	17	75	50	30	140	M6x12 (N.4)	10	10
DKB40.A50	5070256	1.600 kg	25	112	182	16	140	13	170	13	109	65	40	160	M6x12 (N.4)	12	12

SUPPORTI A BASAMENTO E A FLANGIA
CON SPOSTAMENTO ASSIALE SERIE DK
FOOT AND FLANGE SAFETY CHUCKS
WITH AXIAL MOVEMENT DK



DKB



	Codice	Portata	A	B	C	D	E	F	G	H	L	M	N	O	P	Q	S	R
	Code	Load	(max)															
DKB30.A50	5070204	800 kg	22	112	137	65	110	13	110	145	75	50	30	140	M6x12 (N.4)	10	18	80
DKB40.A50	5070254	1.600 kg	25	115	179	75	120	15	160	200	109	65	40	160	M6x12 (N.4)	12	18	80